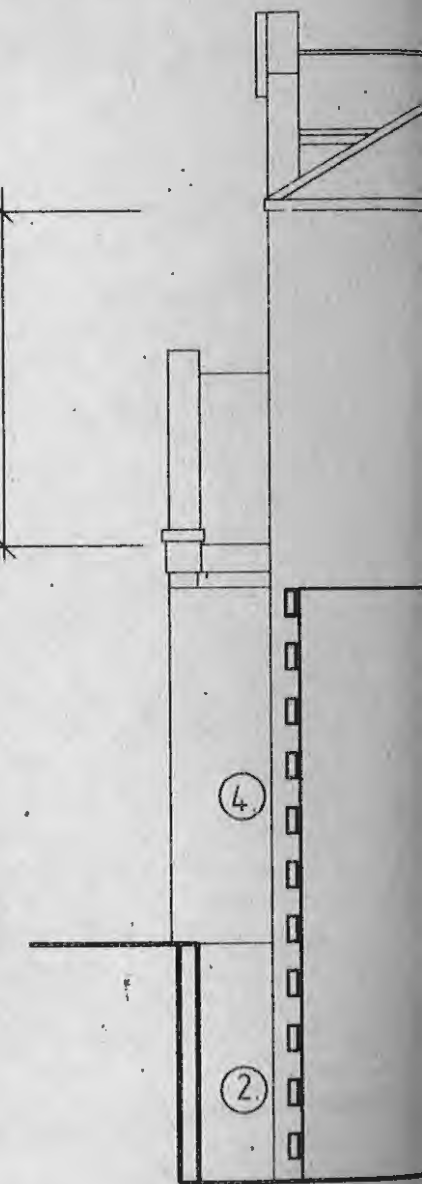


EAST ELEVATION

PREVIOUSLY REPAIRED STONEWORK



WEST ELEV

USE OF THESE DRAWINGS

The design and details shown on these drawings are applicable to this project only and may not be reproduced in whole or in part or be used for any other project or purpose without the written permission of Woodhouse & Danks Pty Ltd. with whom copyright resides.

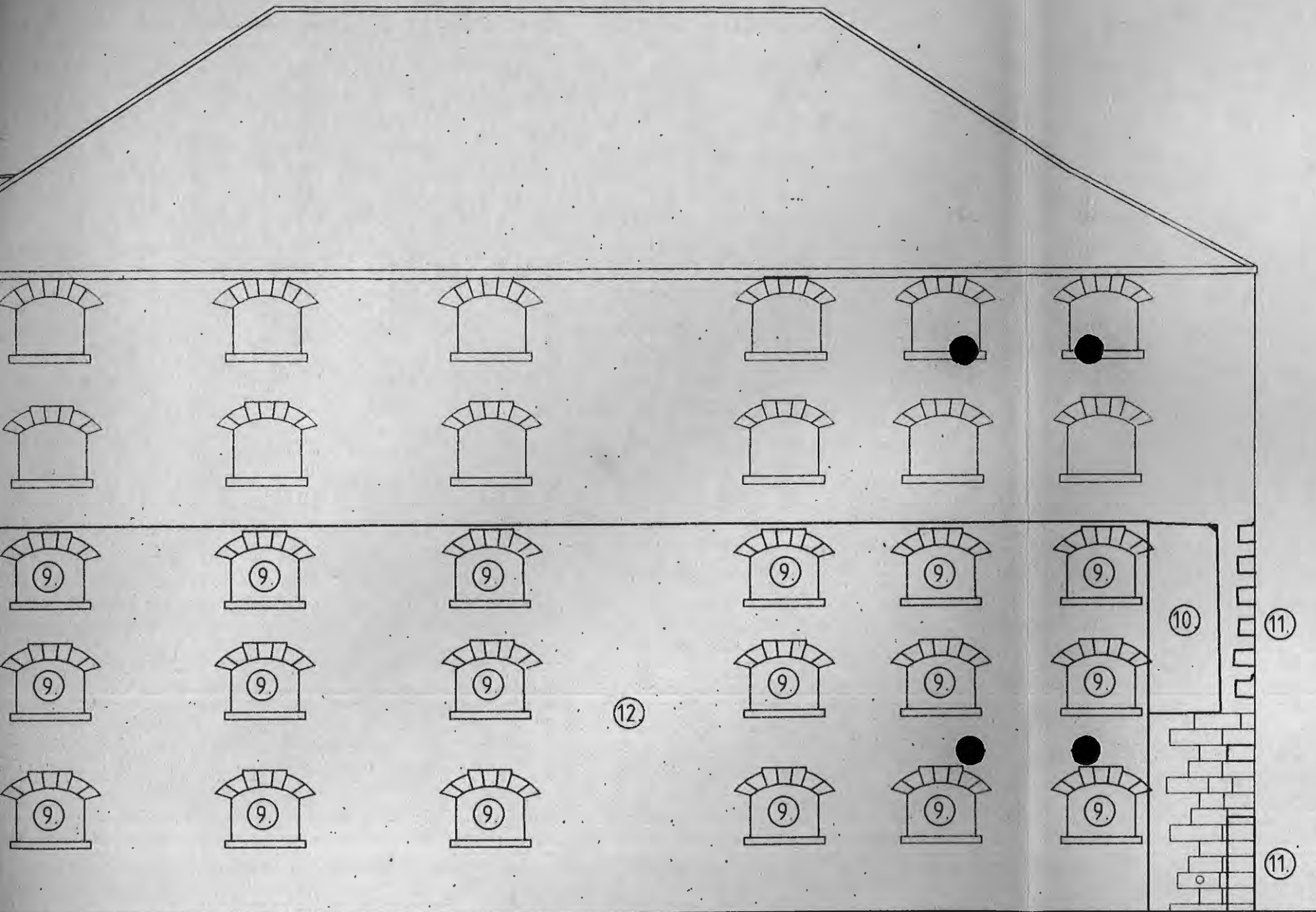
GENERAL NOTES

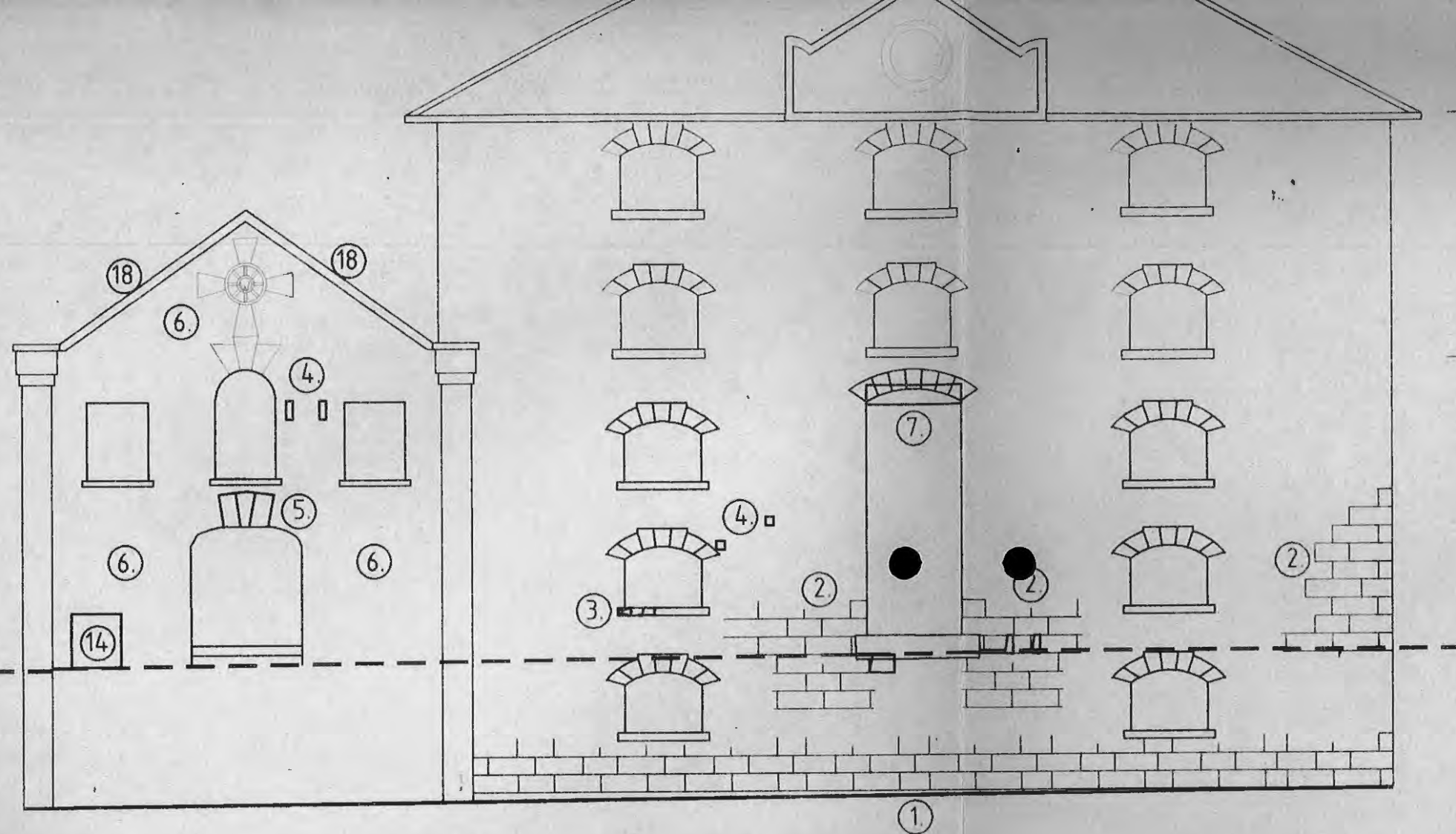
1. CONTRACTORS MUST VERIFY ALL DIMENSIONS ON SITE PRIOR TO THE COMMENCEMENT OF ANY WORK OR THE PREPARATION OF SHOP DRAWINGS.

2. FIGURED DIMENSIONS TO BE USED IN PREFERENCE TO SCALED DIMENSIONS.

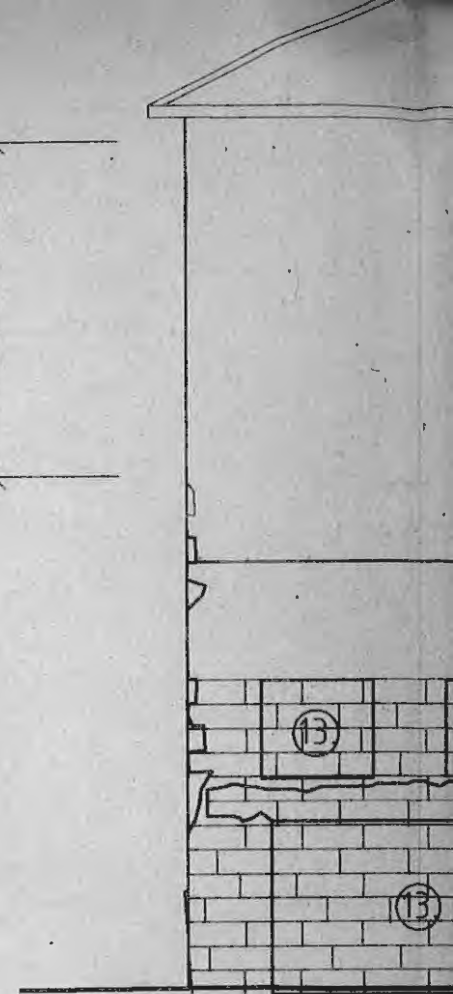
LEGEND:

- ① CLEAN OUT JOINTS TO STONEMWORK & REPOINT WITH MIN. 1:2.9 CEMENT, LIME, SAND MORTAR & SELECTIVE RE-TOOLING FACE OF STONE BLOCK
- ② CLEAN OUT JOINTS TO STONEMWORK, REPLACE DEGRADED BLOCKWORK WITH 100mm STONE FACING, BONDED TO EXISTING STONEMWORK, RETOOL SLIGHTLY WEATHERED STONE & REPOINT WITH MIN. 1:2.9 CEMENT, LIME, SAND MORTAR
- ③ REPLACE SILL, BED IN WITH 1:2.9 CEMENT, LIME, SAND MORTAR
- ④ CLOSE OFF OPENING WITH STONE FACING 75mm THICK INCLUDING 1:2.9 CEMENT, LIME, SAND MORTAR BED OF THICKNESS TO MATCH EXISTING JOINTS
- ⑤ CUT BACK EXISTING CONCRETE KEystone AND REPLACE WITH 150mm THICK STONE FACING OF COLOUR & SURFACE FINISH TO MATCH EXISTING
- ⑥ RETOOL FACE TO REMOVE PAINT FROM STONE BLOCKWORK AND MAKE GOOD TO SURFACE FINISHES - REPOINT
- ⑦ REMOVE LINTEL, & CEMENT RENDER, CLEAN OUT JOINTS TO STONE WORK & REPOINT WITH 1:2.9 CEMENT, LIME, SAND MORTAR, REFORM OPENING MAKING GOOD TO SURFACE FINISHES AROUND OPENING
- ⑧ REMOVE BRICKWORK FROM EXISTING OPENING, RETOOL REVEALS PROVIDE AND FIT NEW STONE SILL TO MATCH EXISTING
- ⑨ REMOVE BRICKWORK & REFORM EXISTING OPENING INCL. NEW STONE SILLS AND MAKE GOOD TO SURFACE FINISHES AROUND OPENINGS
- ⑩ REMOVE CEMENT RENDER FROM STONE BLOCKWORK, CLEAN OUT JOINTS TO STONEMWORK & REPOINT WITH 1:2.9 CEMENT, LIME, SAND MORTAR, RETOOL TO MAKE GOOD TO SURFACE FINISHES
- ⑪ CLEAN OUT JOINTS TO STONEMWORK & REPOINT WITH MIN. 1:2.9 CEMENT, LIME, SAND MORTAR & SELECTIVE RE-TOOLING FACE OF STONE BLOCK. REFACE DEGRADED BLOCKS WITH 100mm THICK FACES WHERE NECESSARY. ON CORNER STONES REPLACE WITH 100mm 'L' SHAPED FACING BLOCKS REMOVE BRICKWORK AND REPLACE WITH STONE BLOCK OF DIMENSION, COLOUR, AND SURFACE FINISH TO MATCH EXISTING
- ⑫ REMOVE CEMENT RENDER FROM STONE BLOCKWORK CLEAN OUT JOINTS TO STONEMWORK & REPOINT WITH 1:2.9 CEMENT, LIME, SAND MORTAR, MAKING GOOD TO SURFACE FINISHES, CONFIRM EXTENT OF WORK FORM OPENINGS IN EXISTING WALL OF SIZE & SHAPE TO MATCH EXISTING - INCLUDE NEW SILLS TO MATCH EXISTING
- ⑬ REMOVE PROTRUDING BRICKWORK & CONCRETE CLOSE OFF OPENING IN 350mm BRICKWORK AND FACE WITH

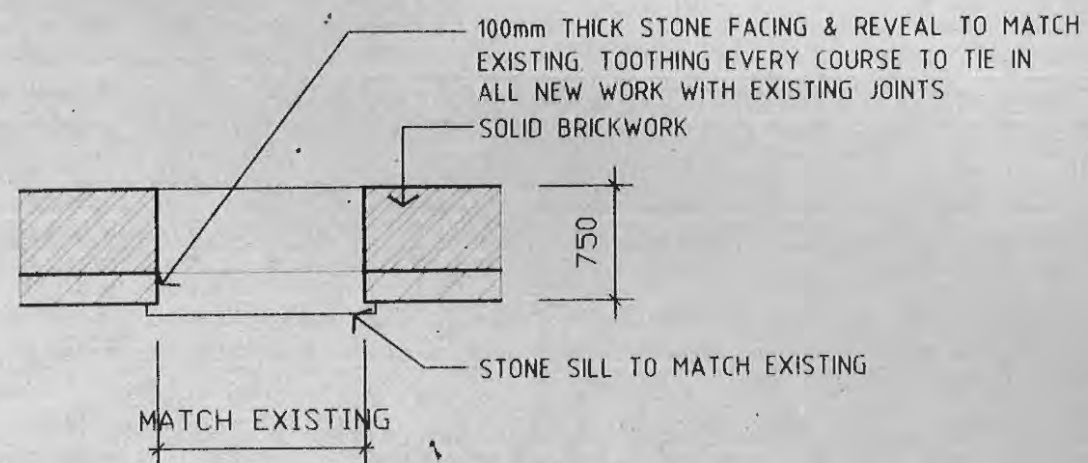




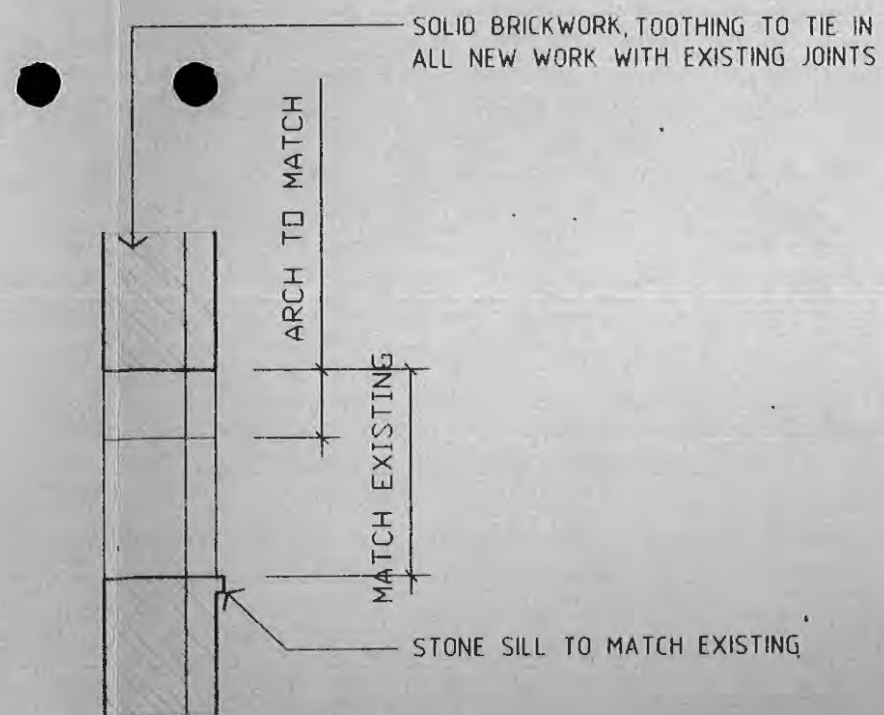
NORTH ELEVATION



SOUTH ELEVATION

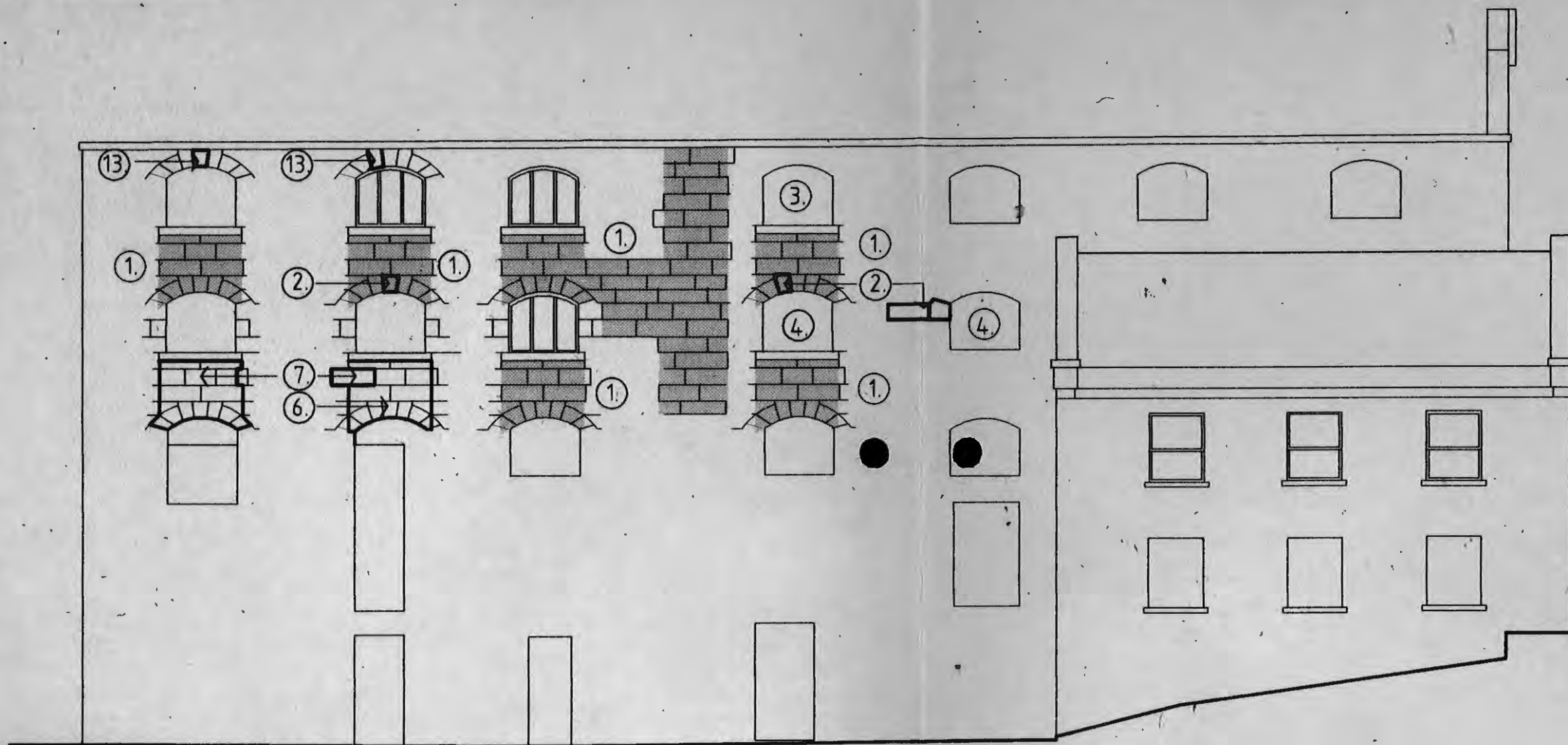


NEW WINDOW OPENING DETAIL

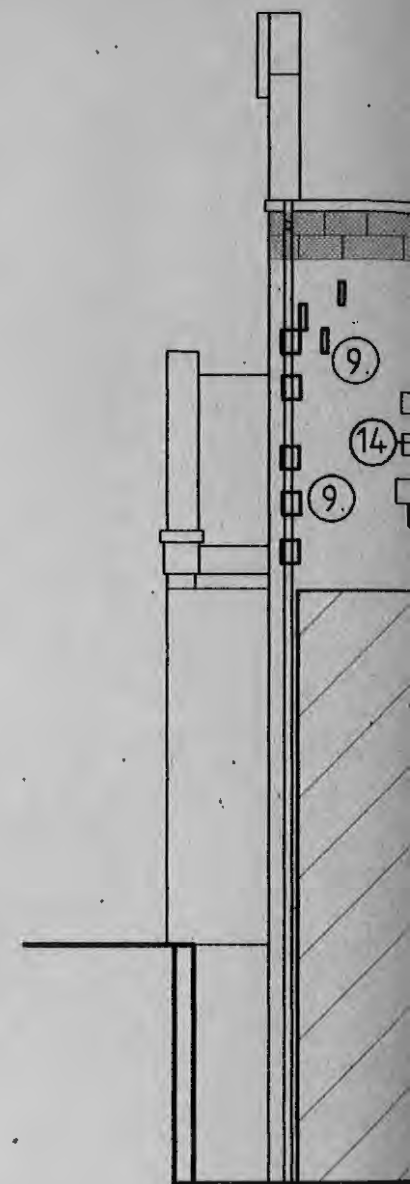


SECTION

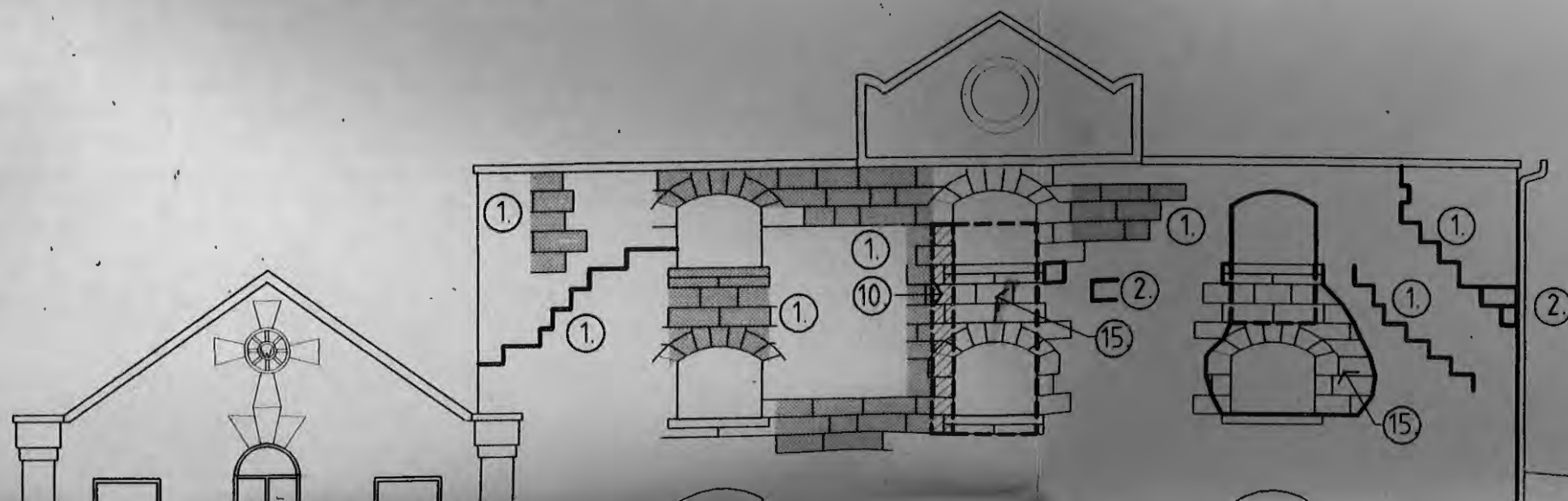
TYPICAL



EAST ELEVATION



WEST ELEVATION



USE OF THESE DRAWINGS

The design and details shown on these drawings are applicable to this project only and may not be reproduced in whole or in part or be used for any other project or purpose without the written permission of Woodhouse & Danks Pty. Ltd. with whom copyright resides.

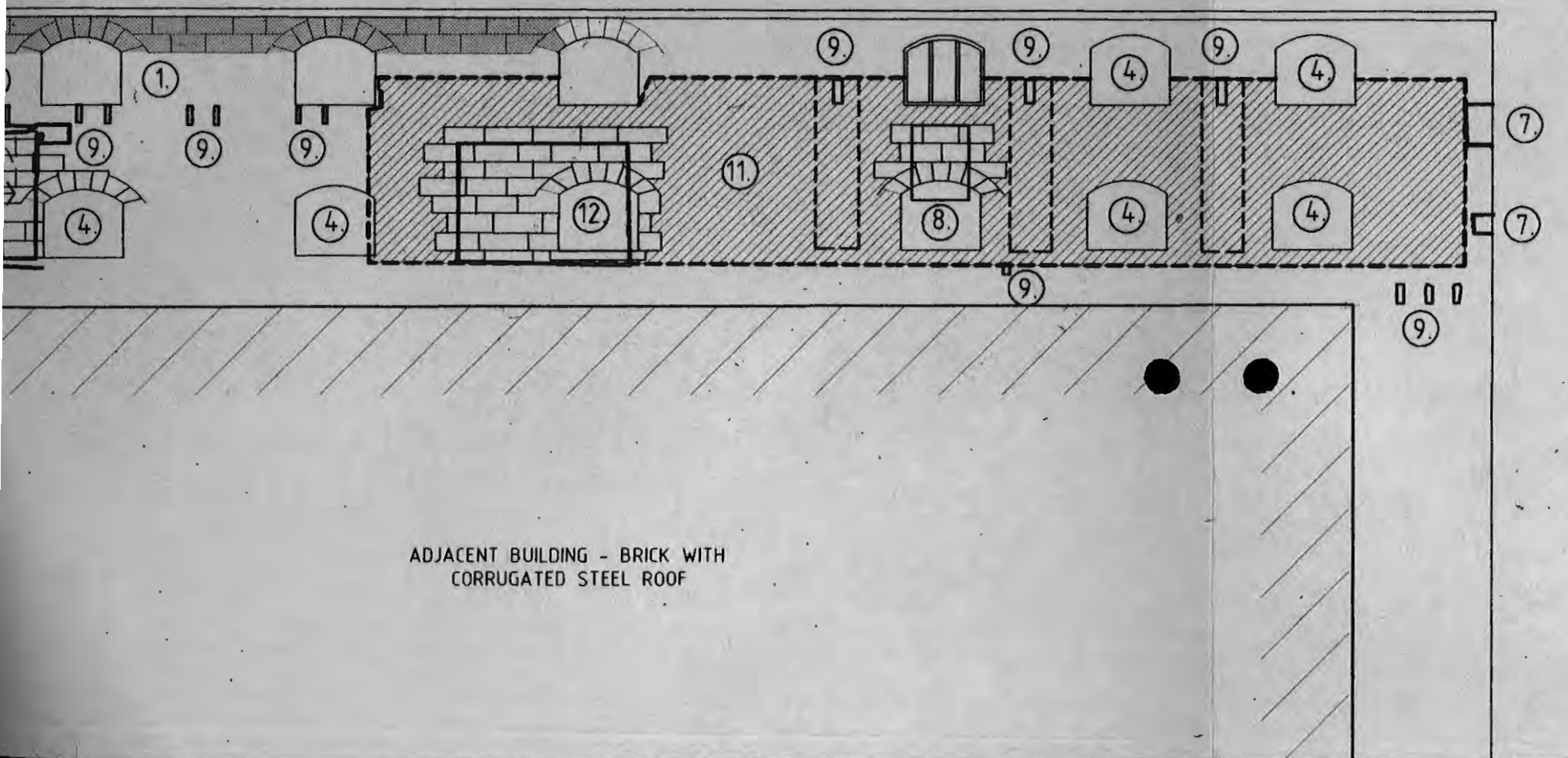
GENERAL NOTES

1. CONTRACTORS MUST VERIFY ALL DIMENSIONS ON SITE PRIOR TO THE COMMENCEMENT OF ANY WORK OR THE PREPARATION OF SHOP DRAWINGS.

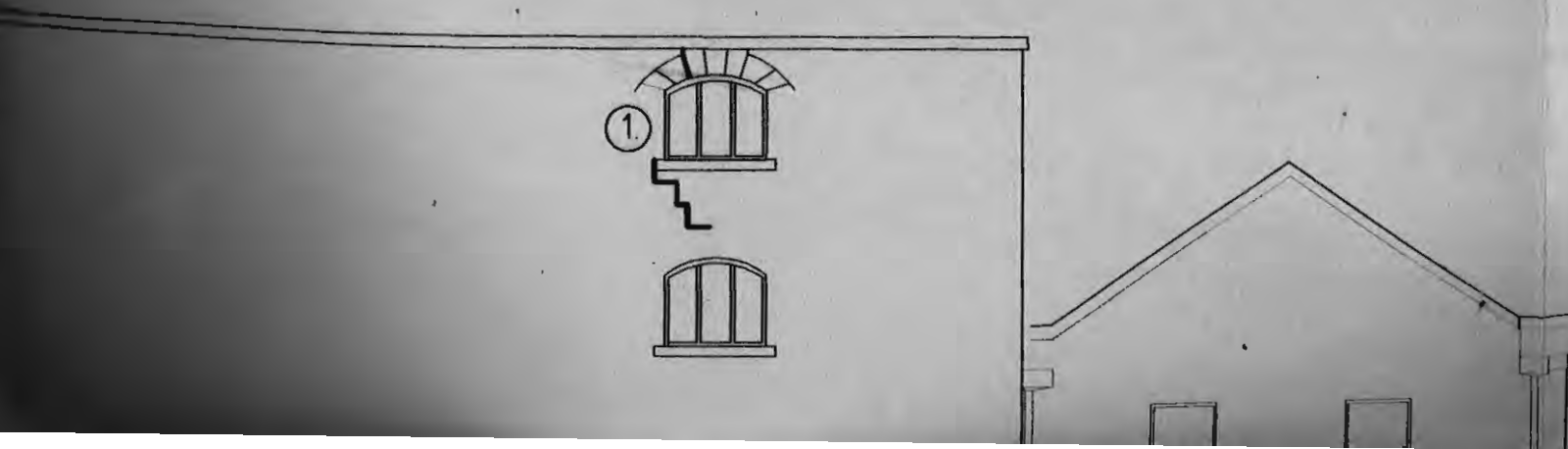
2. FIGURED DIMENSIONS TO BE USED IN PREFERENCE TO SCALED DIMENSIONS.

LEGEND:

- ① CLEAN OUT JOINTS TO STONEMASONRY & REPOINT WITH MIN. 1:2:9 CEMENT, LIME, SAND MORTAR
- ② CUT BACK TO SOLID STONE & REFACE WITH EPOXY STONE MORTAR
- ③ REMOVE STONE BLOCK WORK & REFORM OPENING MAKING GOOD TO SURFACE FINISHES AROUND OPENINGS SAVE STONE BLOCKS FOR REUSE ELSEWHERE
- ④ REMOVE BRICKWORK & REFORM OPENING AND MAKE GOOD TO SURFACE FINISHES AROUND OPENINGS
- ⑤ FORM OPENING IN EXISTING WALL OF SIZE & SHAPE TO MATCH EXISTING
- ⑥ RETOOL FACE OF STONE BLOCK
- ⑦ REMOVE EXISTING STONE AND REPLACE WITH STONE BLOCK OF DIMENSION, COLOUR & SURFACE FINISH TO MATCH EXISTING
- ⑧ CLOSE OFF OPENING IN STONE BLOCKWORK 100mm THICK TO OUTER FACE. CLOSE OFF REMAINDER IN SOLID BRICKWORK, TOOTHING EVERY COURSE TO TIE IN NEW WORK WITH EXISTING JOINTS REMOVE BRICKWORK & REFORM OPENING MAKING GOOD TO SURFACE FINISHES AROUND OPENINGS
- ⑨ CLOSE OFF OPENING WITH STONE FACING 50mm THICK INCLUDING 1:2:9 CEMENT, LIME, SAND MORTAR BED OF THICKNESS TO MATCH EXISTING JOINTS
- ⑩ REMOVE PAINT FROM STONE BLOCKWORK AND MAKING GOOD TO SURFACE FINISHES
- ⑪ REMOVE CEMENT RENDER AND BRICK PIERS FROM STONE BLOCKWORK, CLEAN OUT JOINTS TO STONEMASONRY & REPOINT WITH 1:2:9 CEMENT, LIME, SAND MORTAR, MAKING GOOD TO SURFACE FINISHES
- ⑫ REMOVE EXISTING LINTEL AND FILL RECESS WITH STONE BLOCKWORK 100mm THICK TO EXTERNAL FACE WITH SOLID BRICK INFILL BEHIND. REFORM WINDOW OPENING TO MATCH EXISTING, TOOTHING EVERY COURSE TO TIE IN ALL NEW WORK WITH EXISTING JOINTS



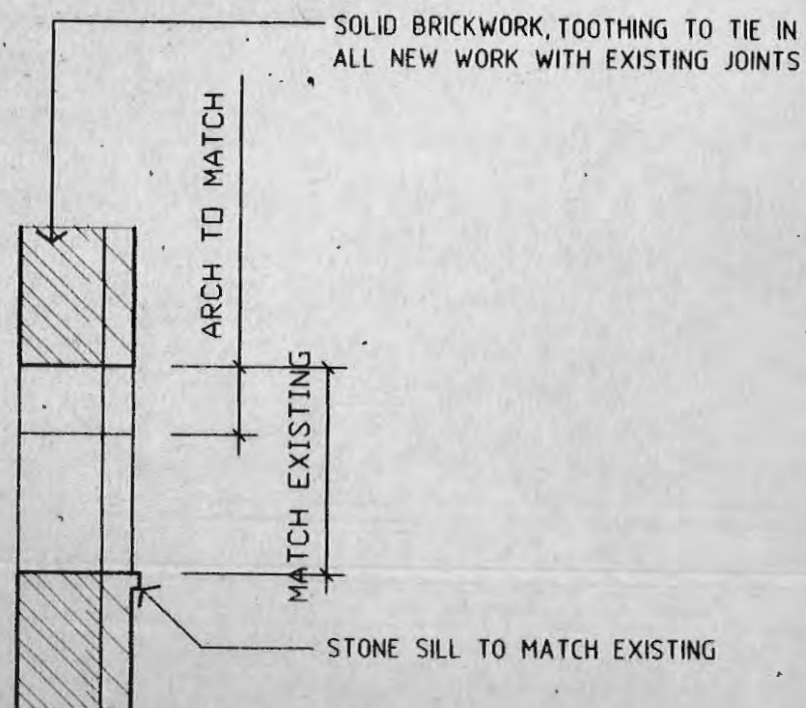
TION



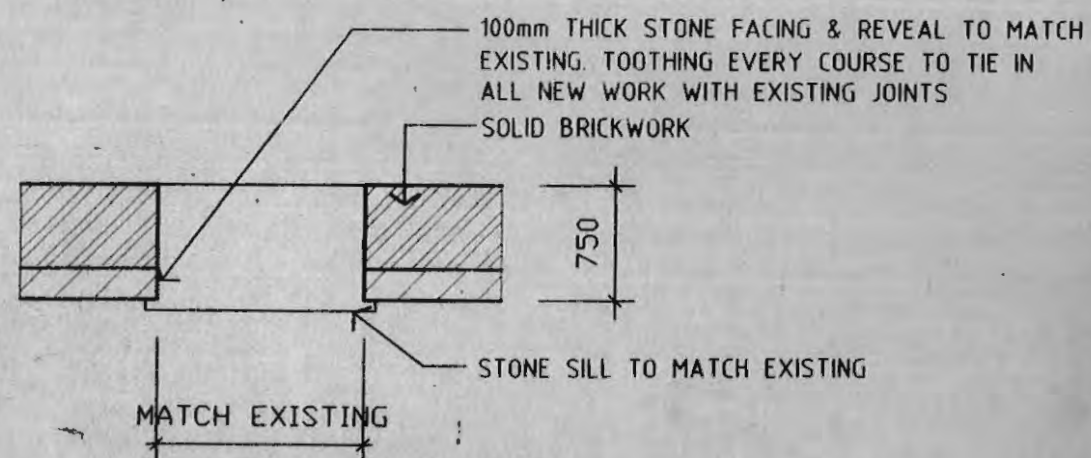
ADJACENT BUILDING - BRICK WITH
CORRUGATED STEEL ROOF

NORTH ELEVATION

SOUTH ELEVATION



SECTION



NEW WINDOW OPENING DETAIL



- | | | | | |
|-----|---------|-------------------------|------|------|
| | | | | |
| | | | | |
| | | | | |
| | | | | |
| | | | | |
| | | | | |
| | | | | |
| / | 1.7.99 | CLIENT / HOLDING GUNEN' | | |
| / | 19.8.97 | ISSUED FOR BA / DA. | | |
| No. | DATE | REVISION OR ISSUE | DWN. | CHK. |

NICK SCALI
CANTERBURY SUGAR MILL
CNR. HUTTON & CHURCH STREETS
CANTERBURY

**BUILDING REINSTATEMENT
STONE REPAIR - ELEVATIONS**

WOODHOUSE & DANKS PTY.
ARCHITECTS LTD.

35 YORK STREET
SYDNEY 2000

TEL. 9299 4495
FAX. 9299 2053
A.C.N. 064 690 106



JOB No. _____

9743

DWG. No.

A-05

DWN: RN

CAD FILE

SCALE

1:100

DATE _____

AUG 97

CHECKED

DWN: RN